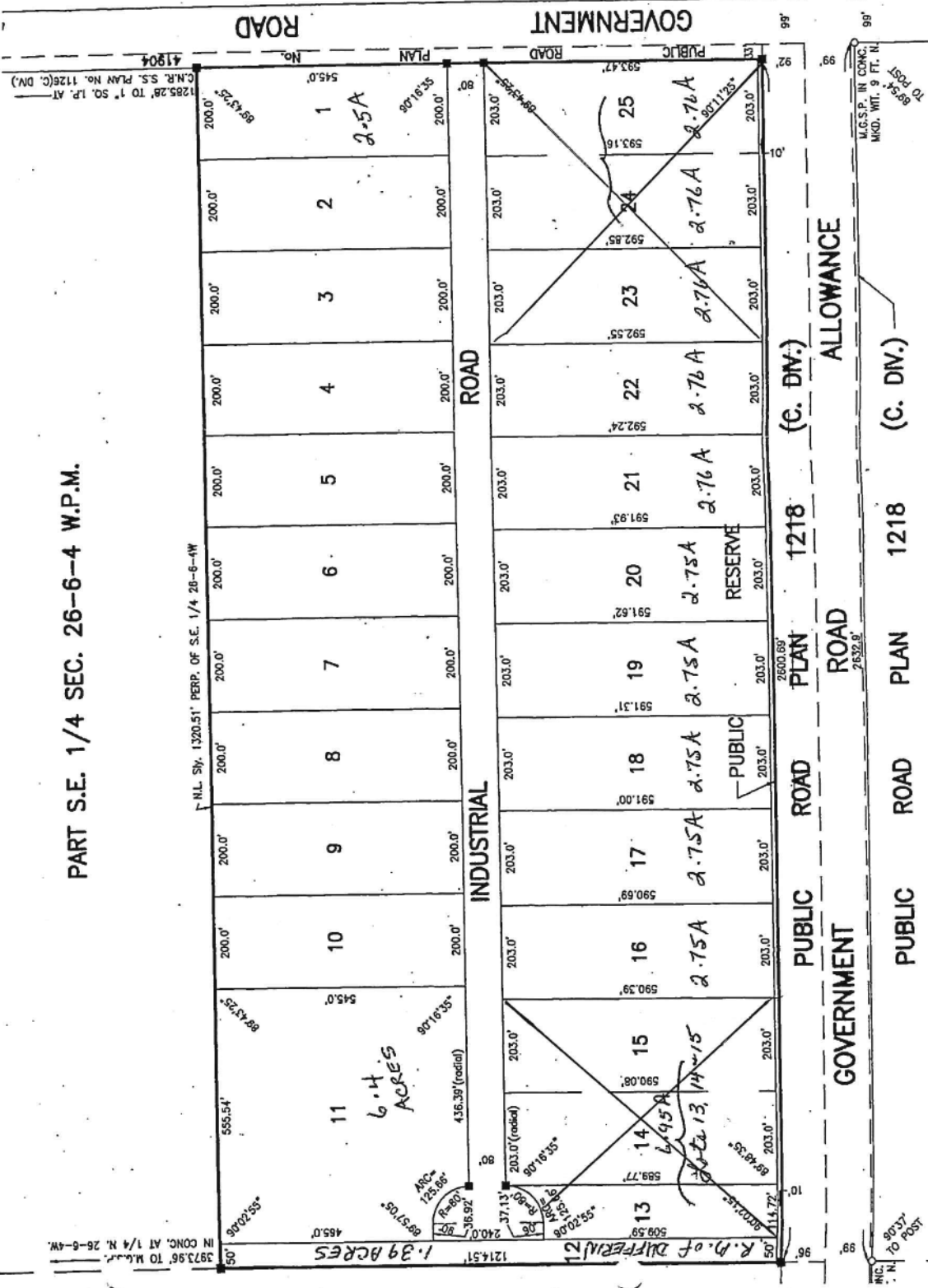


PART S.E. 1/4 SEC. 26-6-4 W.P.M.



PART S.W. 1/4 SEC. 25-6-4 W.P.M.

Plan No. 42600

PART N.W. 1/4
SEC. 24-6-4 W.P.M.

3973.96' TO M.C.P. IN CONC. AT 1/4 N. 26-6-4W.

1214.51' 1.39 ACRES

509.59' R.O. of DIFFERENTIAL

1500' 43.06' TO POST

PUBLIC ROAD PLAN 1218 (C. DIV.)

GOVERNMENT ROAD PLAN 1218 (C. DIV.)

ALLOWANCE

M.G.S.P. IN CONC. MKD. WIT. 9 FT. N. TO POST

PART N.E. 1/4 SEC. 23-6-4 W.P.M.